

Guide to Parking rules in NSW

Things to know to help traffic flow

This guide has been developed to explain the common parking rules and restrictions in place in NSW.

Parking restrictions are put in place for road safety reasons, for example to give drivers a clearer view around pedestrian crossings, intersections and schools. They are also designed to allow drivers and other road users to share road side parking equitably in busy areas (eg outside shops and in cities and towns).

This guide is not intended to represent in any manner a substitute for the legislation and is intended only as a summary of information.

Index	
Angle parking	12
Area parking signs	7
Parking areas signs	7
Special event parking area signs	8
Restricted parking area signs	8
No parking area signs	8
Australian Road rules	2
Bicycle lanes, bus lanes and transit lanes signs	6
Bus zone signs	5
Clearway signs	4
Special event clearway signs	4
Clearway lines	4
Definitions	
Built up area	12
Emergency stopping lane signs	4
Freeway and motorway signs	4
Loading zone signs	4
Mail zone signs	6
No parking signs	3
No standing signs	3
No stopping lines	3
No Stopping signs	2
Parallel parking on a road	12
Parking control signs	2
Parking without signs	3
Permissive parking rules	6

Mobility parking	6
Meters, tickets and coupons	7
Bicycle or motorbike parking	7
Park in bays only signs	7
Stopping distances	9
Stopping in or near an intersection	9
Stopping on or near a children's crossing	9
Stopping on or near a pedestrian crossing	9
Stopping on or near a marked foot crossing	9
Stopping at or near a bicycle crossing lights	9
Stopping on or near a level crossing	10
Stopping in a shared zone	10
Stopping on a bridge, causeway or ramp	10
Stopping in a tunnel or underpass	10
Stopping on a crest or curve outside a built-up area	10
Stopping at or near a bus stop	10
Stopping on a path, dividing strip or nature strip	11
Stopping and obstructing access to and from a footpath, driveway etc	11
Stopping near a postbox	11
Stopping on roads - heavy & long vehicles	11
Taxi zone signs	6
Truck zone signs	5
Works zone signs	5

Australian Road Rules

The Australian Road Rules were released in December 1999. The rules were developed by the National Road Transport Commission in consultation with all Australian State and Territory governments. NSW uses the ARR as the model for our road rules.

The rules governing parking on road and road related areas (such as off-street parking or areas open to or used by the public) have illustrations of Australian Standard and other permitted parking control signs. These signs are included in this Guide.

Parking control signs are regulatory signs. Drivers must obey the directions on them and it is an offence to disobey them.

Parking control signs

Australian Standard symbolic parking control signs that are simple and easy to read and understand have been used in NSW since September 1997. These signs are usually found in all Australian States & Territories. However, States & Territories also have a number of parking signs that are unique to their State. In NSW the *No Stopping Sign* is an example of this.

Old parking control signs are gradually being replaced by new symbolic signs through normal maintenance needs or by the introduction of new parking schemes.

There are two basic types of parking control. These are:

- Linear parking control which have signs that have a directional arrow and apply to a length of road.
- Area parking control which have signs with the word *Area* on them and apply to an area containing a number of roads.

Both types of control indicate the start and end of the length of road or area to which the restrictions apply.

Notes:

If a parking control sign indicates that it applies on a particular day(s) of the week the sign does not apply on a public holiday unless information on the sign indicates that it does.

It is a defence against any parking offence if you stop to avoid a collision, or if your vehicle is disabled, or you stop to deal with a medical or other emergency, or you stop because your condition or the condition of a passenger or your vehicle require you to stop to comply with some other traffic law. In all case you are only permitted to stop for as long as is necessary.

Parking without signs

When parking control signs do not appear on a length of road parking restrictions generally do not apply. However, certain mandatory restrictions do apply at particular locations such as pedestrian crossings and at intersections where parking control signs are not erected. (See page 9 Stopping Distances).

No stopping signs

You must not stop on a length of road to which a *No Stopping* sign applies.

Where times of operation are shown on the sign, the sign only applies at those times.

Some *No Stopping* signs may have exceptions. In these cases nominated persons or vehicles are excepted from the signs restrictions.

No Stopping lines

You must not stop at the side of a road marked with a continuous yellow edge line.

No Parking signs

You must not stop on a length of road to which a *No Parking* sign applies unless you are dropping off, or picking up, passengers or goods.

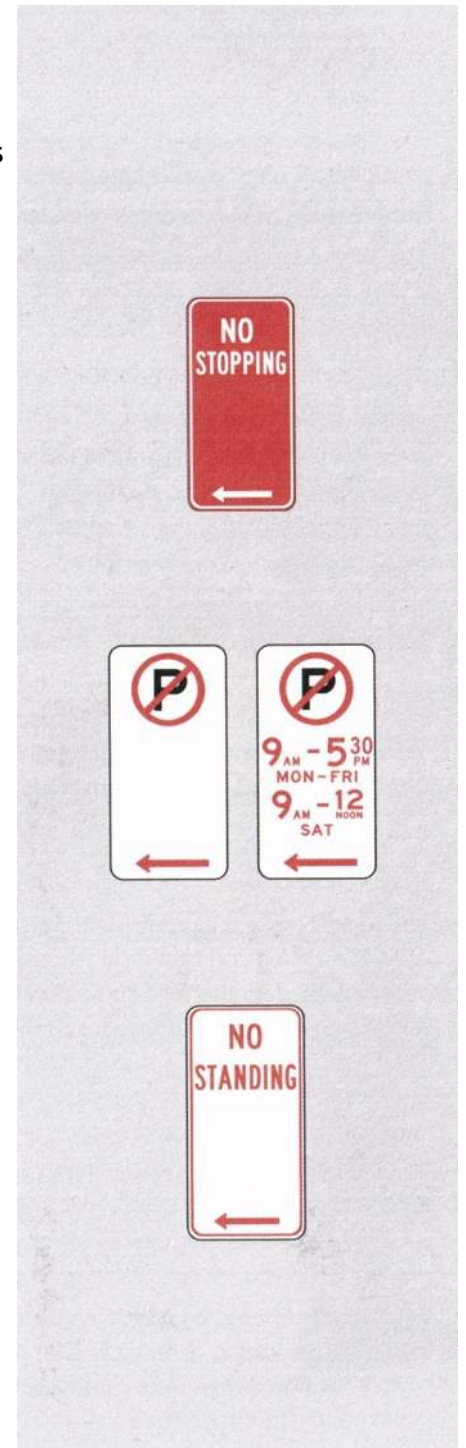
You must not leave the vehicle unattended (i.e. be more than 3 metres from the closest point of the vehicle) and you must complete the dropping off, or picking up of passengers or goods within 2 minutes after stopping.

Where times of operation are shown on the sign, the sign only applies at those times.

Some *No Parking* signs may have exceptions. In these cases nominated persons or vehicles are excepted from the signs restrictions.

No Standing signs

No Standing signs have been phased out in NSW. However, should you come across a *No Standing* sign, it has the same meaning as a *No Stopping* sign.



Clearway signs

You must not stop or park on a length of road to which a *Clearway* sign applies. The drivers of public buses, taxis and private hire vehicles are permitted to stop when dropping off or picking up passengers. Where times of operation are shown on the sign, the sign only applies at those times. On extended lengths of clearways, small repeater signs may be displayed. If your vehicle is left in a clearway, it may be towed away to a nearby street where it may lawfully stand. The end of the clearway is indicated by an *End Clearway* sign.

Special Event Clearway signs

Special Event Clearway signs have the same meaning as *Clearway* signs described above. Where times and dates of operation are shown on the sign, the sign only applies at those times and dates.

Clearway lines

You must not stop or wait at the side of a road marked with broken yellow clearway (no stopping) line unless it is in accordance with the *Clearway* sign applying to that road.

Freeway and Motorway signs

You must not stop or park on a freeway or motorway which is identified by freeway or motorway start and end signs unless you are permitted to park in a signposted Truck Parking Area or Bus Parking Area.

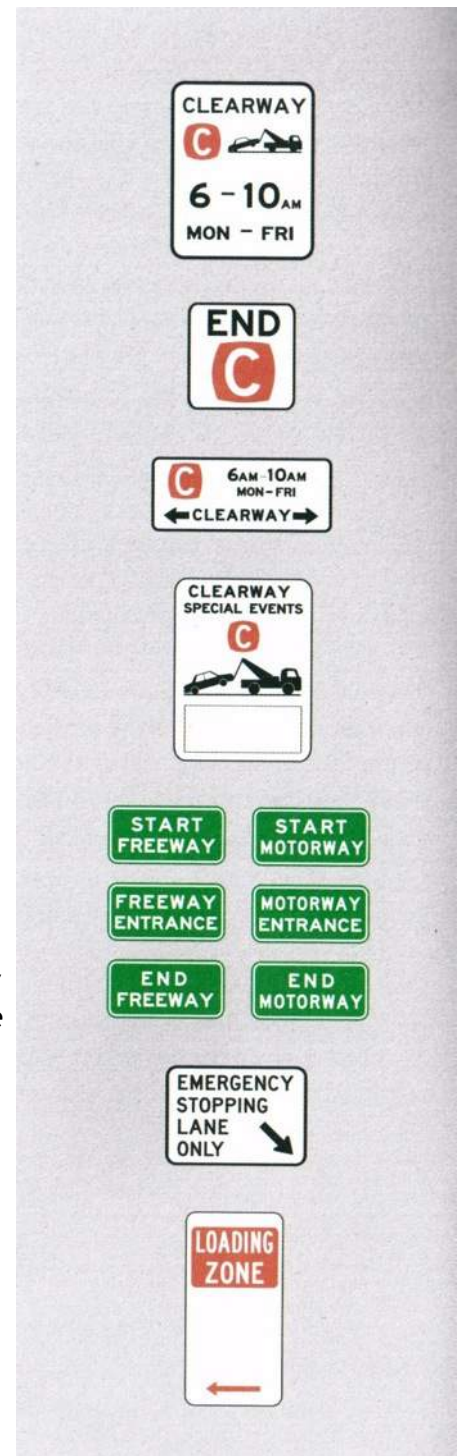
Emergency Stopping Lane signs

You (unless riding a bicycle) must not stop in an emergency stopping lane unless your condition, or the condition of a passenger or your vehicle, or any other factor, makes it necessary or desirable for you to stop in the emergency stopping lane in the interests of safety, and you stop for no longer than is necessary in the circumstances.

Loading Zone signs

You must not stop or park in a loading zone unless you are driving a public bus that is dropping off or picking up passengers or truck that is dropping off or picking up goods. If the vehicle is a station wagon or a motor bike that has 3 wheels and is constructed principally for the conveyance of goods, you may stop or park for a period not exceeding 15 minutes while you are actually engaged in taking up or setting down goods from the vehicle.

If the vehicle is a motor vehicle constructed principally for the conveyance of goods (other than station wagon or a motor bike that has 3 wheels) you may stop or park for a period not exceeding 30 minutes while you are actually engaged in picking up or setting down goods from the vehicle.



You are also permitted to stop in a loading zone while any person is actually entering or alighting from the vehicle. Where times of operation are shown on the sign, the sign only applies at those times. A station wagon is a motor vehicle where the body forward of the front seats is the same or substantially the same as in a car of the same make, and in which there is no significant reduction in height from the front seats to the rear of the vehicle. The vehicle also requires an entrance at the rear suitable for the loading and unloading of goods, and that is manufactured with rear seats which can be folded or removed readily to provide additional floor space for the carriage of goods, and that, when the seats immediately to the rear of the front seats are in position for passengers, there is still a substantial space for the carriage of goods in proportion to the overall size of the interior of the vehicle.

Ticket operated loading zone signs

These zones are indicated by the word *Ticket* on a *Loading Zone* sign and require you to obtain a ticket from a nearby ticket machine. There is no charge for the ticket. The ticket must be displayed in your vehicle. Only goods vehicles, that is, vehicles constructed principally to carry goods, may use ticket-operated loading zones.

Truck Zone signs

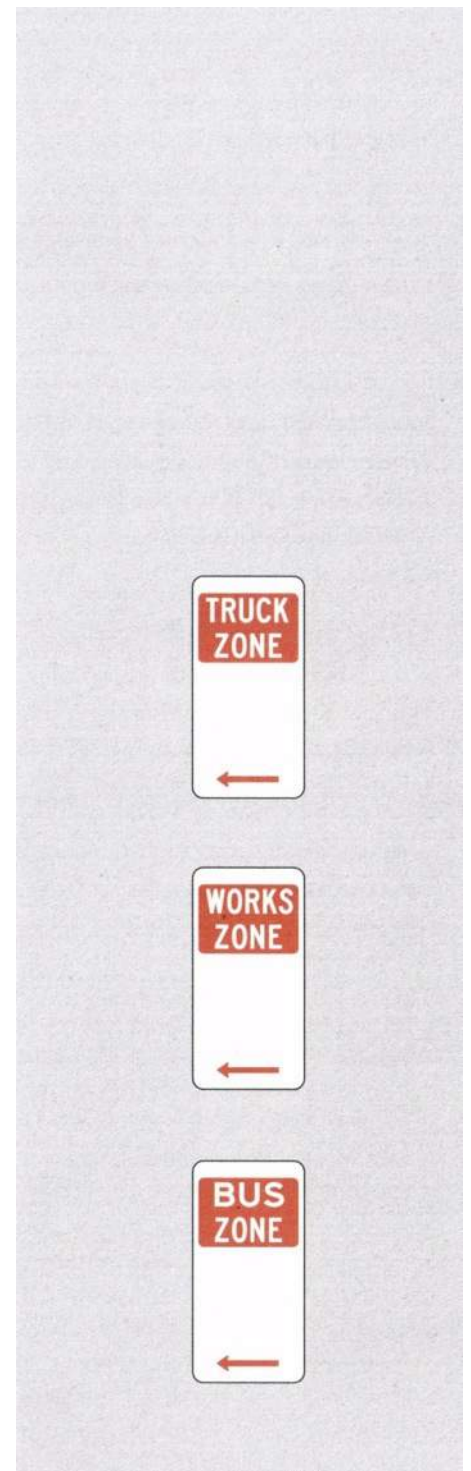
You must not stop or park in a truck zone unless you are driving a truck (with a Gross Vehicle Mass over 4.5 tonnes) that is dropping off, or picking up, goods. You are permitted to stop in a truck zone while any person is actually entering or alighting from the vehicle. Where times of operation are shown on the sign, the sign only applies at those times.

Work Zone signs

You must not stop or park in a work zone unless you are driving a vehicle that is engaged in construction work in or near the zone. You are permitted to stop in a work zone while any person is actually entering or alighting from the vehicle. Where times of operation are shown on the sign, the sign only applies at those times.

Bus Zone signs

You must not stop or park in a bus zone unless you are driving a public bus (except a public bus of a kind that is not permitted to stop in the bus zone by information on or with the *Bus Zone* sign applying to the bus zone) which is actually engaged in taking up or setting down passengers or is stopping for the purpose of a regular passenger service. Where times of operation are shown on the sign, the sign only applies at those times.



Taxi Zone signs

You must not stop or park in a taxi zone unless you are driving a taxi. Where times of operation are shown on the sign, the sign only applies at those times.

Mail Zone signs

You must not stop in a mail zone unless your vehicle is a postal vehicle. Where times of operation are shown on the sign, the sign only applies at those times.

Bicycle Lane, Bus Lane & Transit Lane signs

You must not stop or park in a bicycle lane, bus lane or transit lane unless you are driving a public bus, taxi or private hire vehicle and are dropping off or picking up passengers. Where times of operation are shown on the sign, the sign only applies at those times. If your vehicle is left in a bus lane or transit lane it may be towed away to a nearby street where it may lawfully stand.

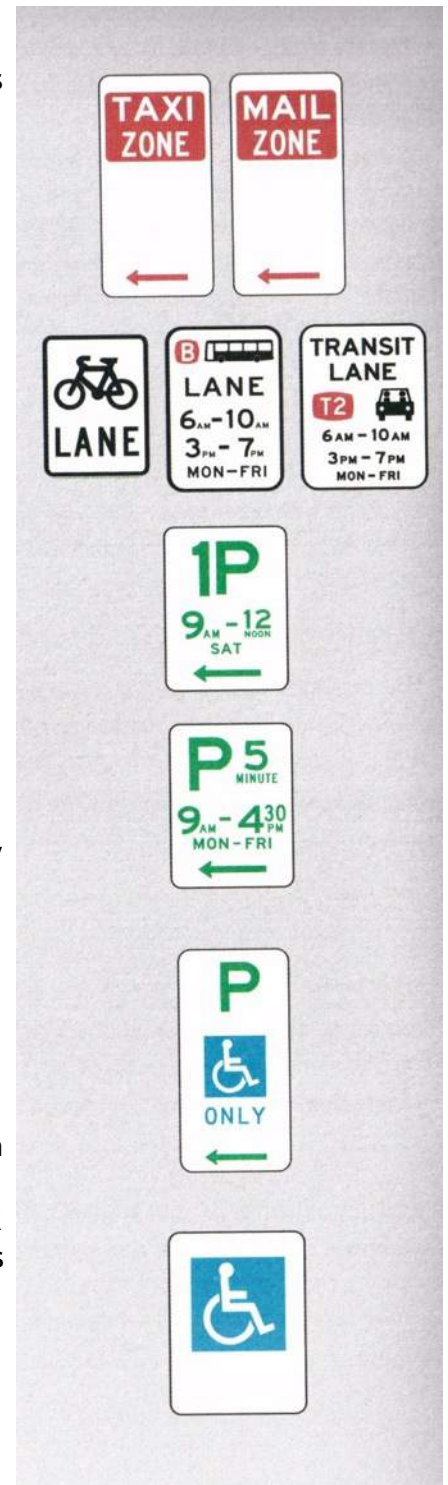
Permissive parking signs

You may park a vehicle for the period indicated on a permissive parking sign. A number immediately to the left of the letter P indicates that you must not park on the length of road, or in the area, continuously for longer than the number of hours shown. A number, together with the word minute, immediately to the right of the letter P indicates that you must not park on the length of road, or in the area, continuously for longer than the number of minutes shown. Where times of operation are shown on the sign, the sign only applies at those times. If the sign indicates either Permit Holders Excepted or Authorised Residents Vehicles Excepted, then vehicles displaying these permits are excepted from the time limits imposed by the parking signs.

Mobility parking signs

When the wheelchair logo appears on a sign as shown, this means that only vehicles displaying a valid *Mobility Parking Scheme Authority* issued by the Roads and Traffic Authority (RTA) may park on that length of road or in the parking space indicated by the sign or signs. A valid Mobility Parking Scheme Authority holder may also park their vehicle in a parking space controlled by permissive parking signs as described above for the following periods:

30 minutes if the maximum period allowed by the sign is less than 30 minutes; 2 hours if the maximum period allowed by the sign is 30 minutes; and an unlimited period of time if the maximum period of time allowed by the sign is more than 30 minutes. Holders are also exempted from the payment of parking fees for meter, ticket and coupon parking. Holders of a *Mobility Parking Scheme Authority* issued by interstate or overseas authorities are also eligible for the same concessions.



Meters, ticket and coupon parking signs

When the word Meter, Ticket or Coupon is added to a permissive parking sign, you must pay the relevant parking fee as indicated on the parking meter, ticket or parking coupon. Where times of operation are shown on the sign, the sign only applies at those times. If the sign indicates either Permit Holders Excepted or Authorised Residents Vehicles Excepted, vehicles displaying these permits are excepted from the time limits and charges imposed by the parking signs. People with Mobility Parking Scheme Authorities can park as indicated in the Mobility Parking section above. Where special methods of parking (e.g. Angle) are required or where the parking is reserved for particular vehicles, this is shown on the sign. You must obey the requirements of the sign.

Bicycle or Motor Bike parking signs

On a length of road to which a *Bicycle Parking* sign or a *Motor Bike Parking* sign applies, you must not stop or park unless you are dropping off, or picking up passengers, or are the rider of a bicycle (for Bicycle parking signs) or a motor bike (for Motor Bike parking signs).

Park in Bays Only signs

You must not park on a length of road, to which a Park In Bays Only sign applies, except in a parking bay. When you park in a parking bay you must position the vehicle completely within the bay, unless the vehicle is too wide or long to fit completely within the bay. If the vehicle is too wide or long to fit completely within a single parking bay, you must park the vehicle within the minimum number of parking bays needed to park the vehicle.

Area Parking signs

In some areas, such as car parks or the streets surrounding large sporting and show grounds, hospitals or universities, area parking signs are used instead of linear parking signs. In these areas, a *Parking Area* sign is placed at each entry point to the area showing the parking restriction. The parking period restriction applies in all the streets in the area or all parking bays until you reach an *End Parking Area* sign as you leave the area. As for linear parking control signs, you may park a vehicle, in an area so long as the periods on the sign are obeyed. A number immediately to the left of the letter P indicated the number of hours that you may park continuously in the area. Other parking controls also still apply within the area (e.g. *Loading Zone*; *No Parking* sign, etc). In large areas, repeater signs may be erected to remind drivers of the parking restriction.



End Parking Area signs are placed at all exit points from an area and indicate that the limit on parking no longer applies. When the word Meter, Ticket or Coupon is added to the parking sign, you must pay the relevant parking fee for parking in any parking space. Where times of operation are shown on the sign, the sign only applies at those times. If the sign indicates either Permit Holders Excepted or Authorised Residents Vehicles Excepted, vehicles displaying these permits are excepted from the time limits and charges imposed by the parking signs. If the parking meter or ticket machine is not working, the sign operates as a normal parking sign as described above.

Special Event Parking Area signs

These signs are a variation on the parking area signs described above. The parking period indicated on the sign only applies during the nominated dates and times of operation shown on the sign. Time limits imposed by the parking signs do not apply to vehicles displaying relevant permits. Other parking controls still apply within the area. e.g. *Loading Zone*, *No Parking* signs etc. In large areas repeater signs may be erected to remind drivers of the parking restrictions.

End Special Event Parking Area signs are placed at all exit points from an area and this indicates that the limit on parking or restrictions no longer applies.

Restricted Parking Area signs

In a restricted parking area you must not stop or park (unless you are driving a public utility service vehicle) otherwise than in a parking station or in accordance with the directions marked on or adjacent to a parking bay unless you are actually engaged in taking up or setting down persons or goods.

The effect of a *Park in Bays Only* sign is described on page 7. *End Restricted Parking Area* signs are placed at all exit points from an area and this indicated that the restrictions no longer apply.

No Parking Area signs

You must not park in an area to which a No Parking Area sign applies unless you are dropping off or picking up passengers or goods. You must not leave the vehicle unattended (i.e. be more than 3 minutes from the closest point of the vehicle) and you must complete the dropping off or picking up of passengers or goods within 2 minutes after stopping. Where times of operation are shown on the sign, the sign only applies at those times.



Stopping distances

Stopping in or near an intersection

You must not stop or park in an intersection. You must not stop or park on a road within 20 metres from the nearest point of an intersecting road at an intersection with traffic lights, unless you stop or park at a place on a length of road, or in an area, to which a parking control sign permitting stopping applies. You must not stop or park on a road within 10 metres from the nearest point of an intersecting road at an intersection without traffic lights, unless you stop or park at a place on a length of road, or in an area, to which a parking control sign permitting stopping applies or if the intersection is a T-intersection along the continuous side of the continuing road at the intersection.

Stopping on or near a children's crossing

You must not stop or park on a children's crossing, or on the road within 20 metres before the crossing and 10 metres after the crossing, unless you stop or park at a place on a length of road, or in an area, to which a parking control sign permitting stopping applies.

Stopping on or near a pedestrian crossing (except at an intersection)

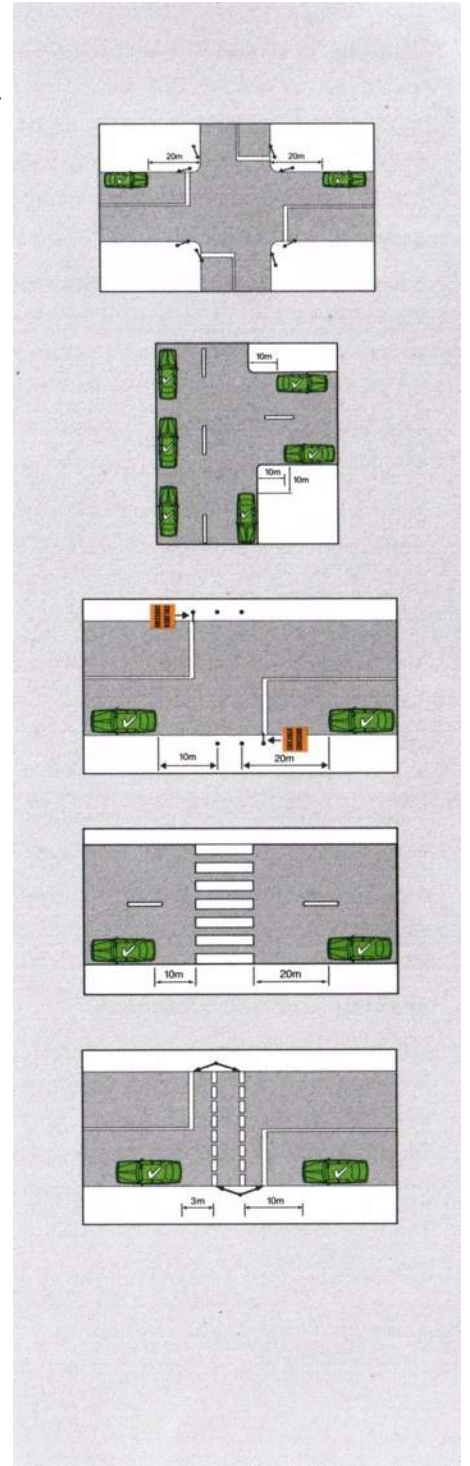
You must not stop or park on a pedestrian crossing (that is not at an intersection), or on the road within 20 metres before the crossing and 10 metres after the crossing, unless you stop or park at a place on a length of road, or in an area, to which a parking control sign permitting stopping applies.

Stopping on or near a marked foot crossing (except at an intersection)

You must not stop or park on a marked foot crossing or on the road within 10 metres before the traffic lights pole nearest to you at the crossing (that is not at an intersection), and 3 metres after the crossing, unless you stop or park at a place on a length of road, or in an area, to which a parking control sign permitting stopping applies.

Stopping at or near bicycle crossing lights (except at an intersection)

When you are on a road with bicycle crossing lights, not at an intersection facing bicycle riders crossing the road; and with traffic lights facing traffic travelling on the road, you must not stop or park within 10 metres before the traffic lights nearest to you, and 3 metres after the traffic lights, unless you stop or park at a place on a length of road, or in an area, to which a parking control sign permitting stopping applies.



Stopping on or near a level crossing

You must not stop or park on a level crossing or on a road within 20 metres before the nearest rail or track to you approaching the crossing and 20 metres after the nearest rail or track nearest to you leaving the crossing, unless you stop or park at a place on a length of road, or in an area, to which a parking control sign permitting stopping applies.

Stopping in a shared zone

You must not stop or park in a shared zone unless you stop or park at a place on a length of road, or in an area, to which a parking control sign permitting stopping applies or you stop or park in a parking bay. You may also stop if you are dropping off, or picking up, passengers or goods or you are engaged in the door-to-door delivery or collection of goods, or in the collection of waste or garbage.

Stopping on a bridge, causeway or ramp, etc

You must not stop or park on a bridge, causeway, ramp or similar structure unless the road is at least as wide on the structure as it is on each of the approaches. You may stop or park at a place on a length of road, or in an area, to which a parking control sign permitting stopping applies.

Stopping in a tunnel or underpass

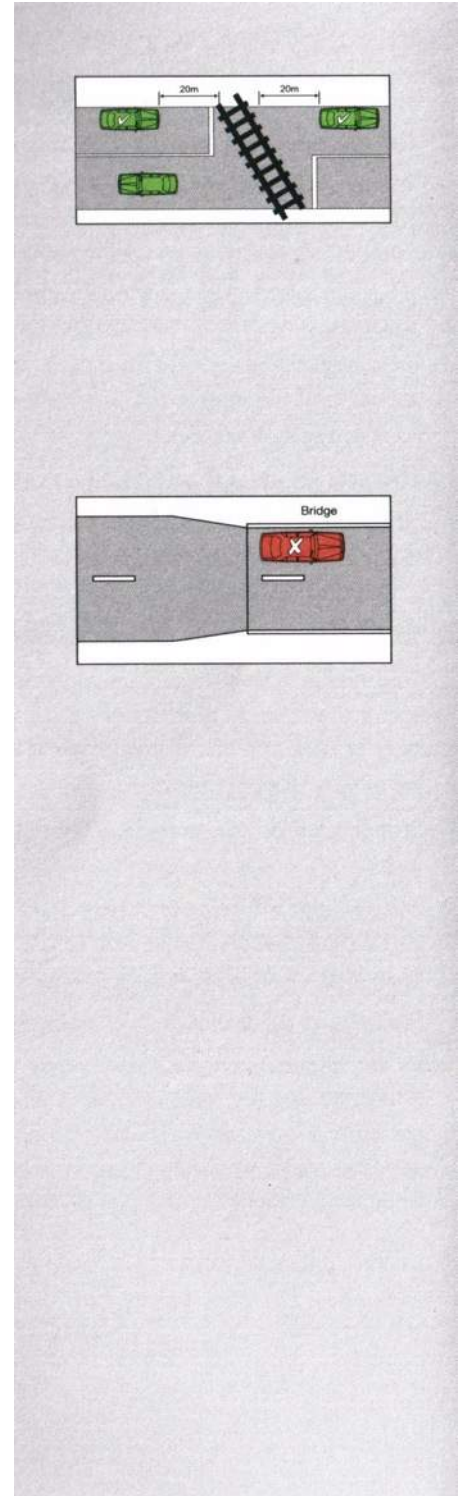
You must not stop or park in a tunnel or underpass unless the road is at least as wide in the tunnel or underpass as it is on each of the approaches. You may stop or park at a place on a length of road, or in an area, to which a parking control sign permitting stopping applies.

Stopping on a crest or curve outside a built-up area

You must not stop or park on or near a crest or curve on a length of road that is not in a built-up area unless your vehicle is visible for 100 metres to drivers approaching your vehicle on the same side of the road as your vehicle. You may stop or park at a place on a length of road, or in an area, to which a parking control sign permitting stopping applies.

Stopping at or near a bus stop

You must not stop or park at a bus stop (unless you are driving a public bus which is actually engaged in taking up or setting down passengers or is stopping for the purpose of a regular passenger service), or on the road, within 20 metres before a sign on the road that indicates the bus stop, and 10 metres after the sign, unless you stop or park at a place on a length of road, or in an area, to which a parking control sign permitting stopping applies.



Stopping on a path, dividing strip or nature strip

You must not stop or park on a bicycle path, footpath, shared path or dividing strip, or a nature strip adjacent to a length of road in a built-up area, unless you stop or park at a place on a length of road, or in an area, to which a parking control sign permitting stopping applies.

Stopping and obstructing access to and from a footpath, driveway, etc

You must not stop or park on a road in a position that obstructs access by vehicles or pedestrians to or from a footpath ramp or a similar way of access to a footpath, or a bicycle path or passageway unless you are driving a public bus that is dropping off, or picking up, passengers.

Also you must not stop on or across a driveway or other way of access for vehicles travelling to or from adjacent land unless you are dropping off, or picking up, passengers.

Stopping near a postbox

You must not stop or park on a road within 3 metres of a public postbox, unless you are dropping off, or picking up, passengers or mail; or you stop or park at a place on a length of road, or in an area, to which a parking control sign permitting stopping applies.

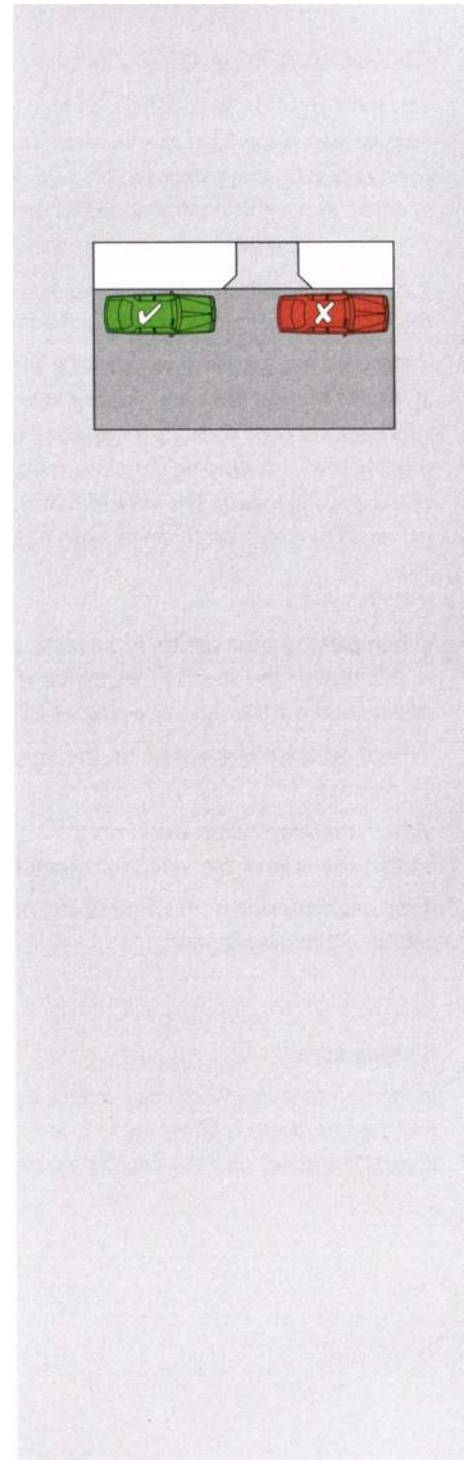
Stopping on roads - heavy and long vehicles

the driver of a heavy vehicle or long vehicle must not stop or park on a length of a road that is not in a built-up area, except on the shoulder of the road.

The driver of a heavy or long vehicle (except a bus), must not stop or park on a length of a road in a built-up area for longer than 1 hour, unless the driver is permitted to stop or park on a length of a road for longer than 1 hour by information on or with a parking control sign, or the driver is actually engaged in taking up or setting down goods. You may also stop if carrying out functions under transport legislation or as directed by Police to stop under such legislation.

Heavy vehicle means a vehicle with Gross Weight Mass of 4.5 tonnes or more.

Long vehicle means a vehicle that, together with any load or projection, is 7.5 metres long, or longer.



Parallel parking on a road

You must position your vehicle to face in the direction of travel of the vehicle in the lane next to you. If the road is two-way road, you must position your vehicle parallel, and as near as possible, to the far left side of the road. If the road is a one-way road, you must position your vehicle parallel, and as near as practical, to the far left of far right side of the road, unless otherwise indicated by information on or with a parking control sign.

If you do not park in a parking bay, you must position your vehicle at least 1 metre from the closest point of any vehicle in front of it and any vehicle behind it.

If the road has a continuous dividing line or a dividing strip, you must position your vehicle at least 3 metres from any dividing line or dividing strip, unless otherwise indicated by information on or with a parking control sign. If the road does not have a continuous dividing line or a dividing strip, you must position your vehicle so there is at least 3 metres or the road alongside the vehicle that is clear for other vehicles to pass, unless otherwise indicated by information on or with a parking control sign.

Angle parking

When parking your vehicle in an angle parking space, you must park your vehicle as near as practical to the specified angle. You must also park your vehicle in accordance with any information on the sign regarding which direction the vehicle is to face (eg rear to kerb). Where no angle is specified on the sign, your vehicle is to be parked as near as practical to 45 degrees. Where no information exists on the sign regarding direction, you must park your vehicle so that the rear of the vehicle is nearest to the centre of the road (ie front in). If the angle parking is 90 degrees and no direction is nominated, then you may park your vehicle either way around.

Definitions

Built-up area

In relation to a length of road, means an area in which there are buildings on land next to the road, or there is street lighting, at intervals not over 100 metres, for a distance of at least 500 metres or, if the road is shorter than 500 metres, for the whole road.

